



Powering & Automating  
Industry Since 1957



# Infrared Preventative Maintenance Inspection Report

CUSTOMER/SITE: JEWISH FAMILY SERVICES

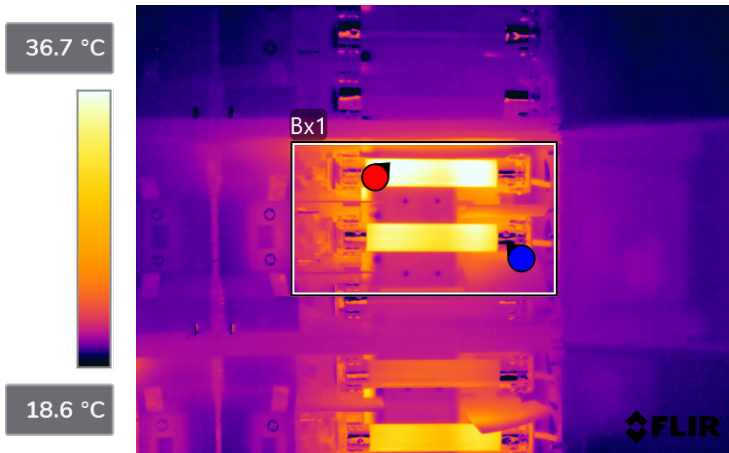
ADDRESS: 6555 MAPLE ROAD, WEST BLOOMFIELD, MI 48322

THERMOGRAPHY DATE: MARCH 19 2022

THERMOGRAPHER: CHRIS P.

ITEM NAME/LOCATION:  
Main Electrical Room/Room 242

3/19/2022 9:17:19 PM



FLIR0708.jpg



72502114

**Parameters**

Emissivity	0.90
Distance	0.91 m
Reflected temp.	26.1 °C
Atmospheric temp.	20.0 °C
Relative humidity	50.0%
Ext. optics temp.	20.0 °C
Ext. optics trans.	1.00

**File information**

File name	FLIR0708.jpg
File size	2109 KB
Width	1024
Height	768
Minimum temp.	16.6 °C
Maximum temp.	37.8 °C

**Camera information**

Camera model	FLIR T1020
Lens	FOL36
Camera serial	72502114
Filter	
Range max.	150.0 °C
Range min.	-40.0 °C
Field of view	27.33

**Measurements**

<b>Bx1</b>	
Max	37.8 °C
Avg	24.7 °C
Min	17.5 °C

**Geolocation**

Coordinates	
Compass degrees	187° S

**Isotherms**

NOTES:

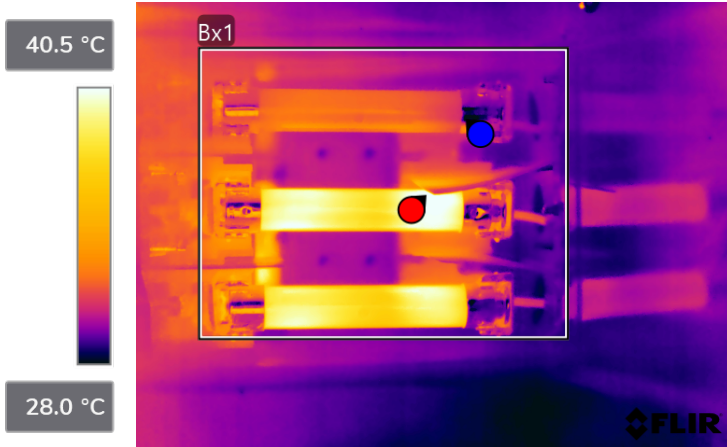
1. Amperage not determined.

RECOMMONDATION(S):

1. Amprobe loads.
2. Confirm conductor and fuse size meet circuit demand.
3. Clean/tighten fuse clips.
4. Replace fuses.

ITEM NAME/LOCATION:  
Main Electrical Room/Room 235

3/19/2022 9:21:52 PM



FLIR0709.jpg



72502114

**Parameters**

Emissivity	0.90
Distance	0.91 m
Reflected temp.	26.1 °C
Atmospheric temp.	20.0 °C
Relative humidity	50.0%
Ext. optics temp.	20.0 °C
Ext. optics trans.	1.00

**File information**

File name	FLIR0709.jpg
File size	2055 KB
Width	1024
Height	768
Minimum temp.	27.0 °C
Maximum temp.	41.2 °C

**Camera information**

Camera model	FLIR T1020
Lens	FOL36
Camera serial	72502114
Filter	
Range max.	150.0 °C
Range min.	-40.0 °C
Field of view	27.33

**Measurements**

<b>Bx1</b>	
Max	41.2 °C
Avg	32.0 °C
Min	27.0 °C

**Geolocation**

Coordinates	
Compass degrees	187° S

**Isotherms**

NOTES:

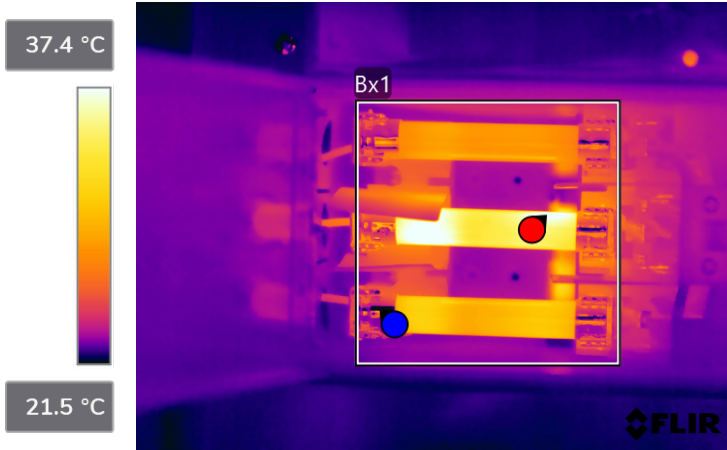
1. Amperage not determined.

RECOMMONDATION(S):

1. Amprobe loads.
2. Confirm conductor and fuse size meet circuit demands.
3. Clean/tighten fuse clips.
4. Replace fuses.

ITEM NAME/LOCATION:  
Main Electrical Room/Room 161

3/19/2022 9:23:17 PM



FLIR0710.jpg



72502114

**Parameters**

Emissivity	0.90
Distance	0.91 m
Reflected temp.	26.1 °C
Atmospheric temp.	20.0 °C
Relative humidity	50.0%
Ext. optics temp.	20.0 °C
Ext. optics trans.	1.00

**File information**

File name	FLIR0710.jpg
File size	2048 KB
Width	1024
Height	768
Minimum temp.	20.8 °C
Maximum temp.	38.4 °C

**Camera information**

Camera model	FLIR T1020
Lens	FOL36
Camera serial	72502114
Filter	
Range max.	150.0 °C
Range min.	-40.0 °C
Field of view	27.33

**Measurements**

<b>Bx1</b>	
Max	38.4 °C
Avg	26.4 °C
Min	20.8 °C

**Geolocation**

Coordinates	
Compass degrees	187° S

**Isotherms**

NOTES:

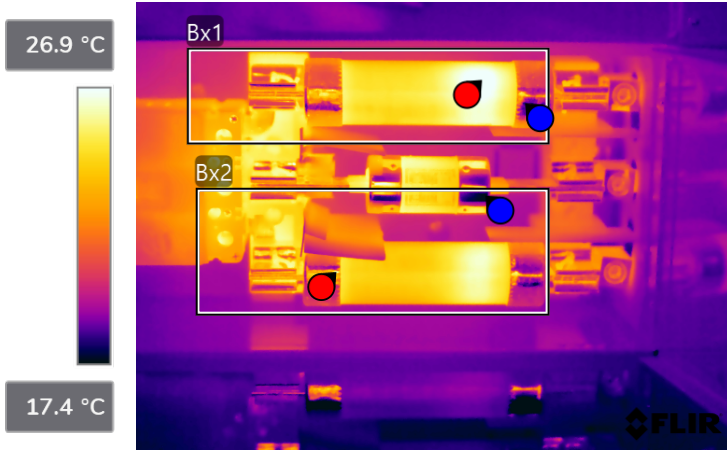
1. Amperage not determined.

RECOMMONDATION(S):

1. Amprobe loads.
2. Confirm conductor and fuse size meet circuit demands.
3. Clean/tighten fuse clips.
4. Replace fuses.

ITEM NAME/LOCATION:  
LP-1AA

3/19/2022 9:27:48 PM



FLIR0712.jpg



72502114

**Parameters**

Emissivity	0.90
Distance	0.91 m
Reflected temp.	26.1 °C
Atmospheric temp.	20.0 °C
Relative humidity	50.0%
Ext. optics temp.	20.0 °C
Ext. optics trans.	1.00

**File information**

File name	FLIR0712.jpg
File size	2121 KB
Width	1024
Height	768
Minimum temp.	16.4 °C
Maximum temp.	27.8 °C

**Camera information**

Camera model	FLIR T1020
Lens	FOL36
Camera serial	72502114
Filter	
Range max.	150.0 °C
Range min.	-40.0 °C
Field of view	27.33

**Measurements**

<b>Bx1</b>	
Max	27.3 °C
Avg	23.0 °C
Min	18.1 °C
<b>Bx2</b>	
Max	26.7 °C
Avg	22.3 °C
Min	17.4 °C

**Geolocation**

Coordinates	
Compass degrees	187° S

**Isotherms**

NOTES:

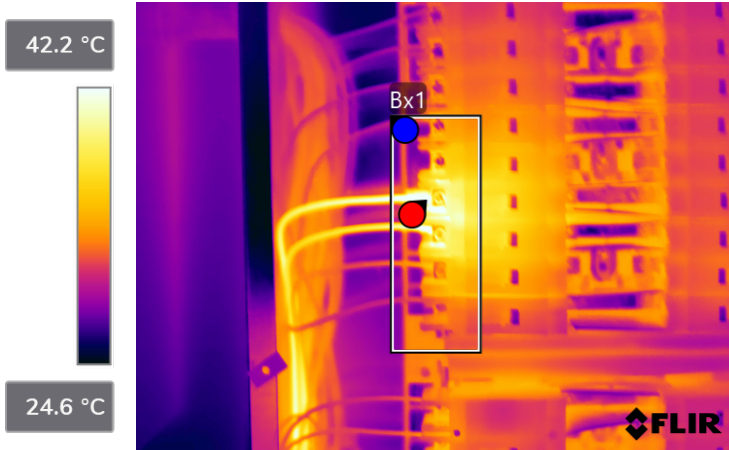
1. Amperage not determined.

RECOMMONDATION(S):

1. Amprobe loads.
2. Confirm conductor and fuse size meet circuit demands.
3. Clean/tighten fuse clips.
4. Replace fuses.

ITEM NAME/LOCATION:  
Conference Room C/Room 175

3/19/2022 9:49:06 PM



FLIR0714.jpg



72502114

**Parameters**

Emissivity	0.90
Distance	0.91 m
Reflected temp.	26.1 °C
Atmospheric temp.	20.0 °C
Relative humidity	50.0%
Ext. optics temp.	20.0 °C
Ext. optics trans.	1.00

**File information**

File name	FLIR0714.jpg
File size	2087 KB
Width	1024
Height	768
Minimum temp.	24.4 °C
Maximum temp.	48.9 °C

**Camera information**

Camera model	FLIR T1020
Lens	FOL36
Camera serial	72502114
Filter	
Range max.	150.0 °C
Range min.	-40.0 °C
Field of view	27.33

**Measurements**

<b>Bx1</b>	
Max	48.9 °C
Avg	33.8 °C
Min	26.6 °C

**Geolocation**

Coordinates	
Compass degrees	79° E

**Isotherms**

NOTES:

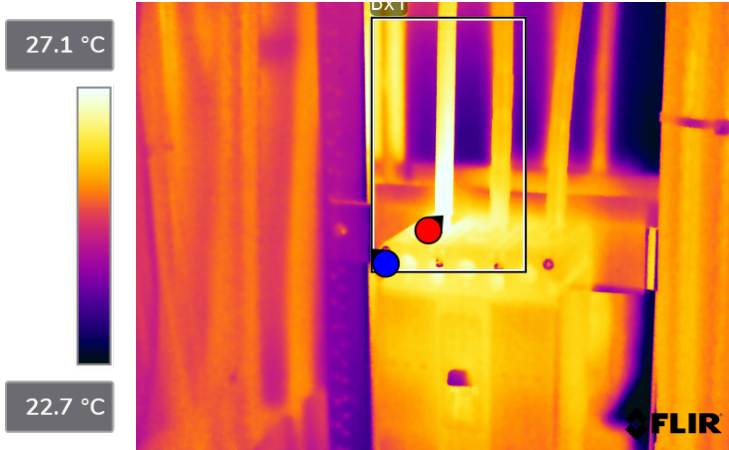
1. Circuit 11- 26 amps protected by a 30 amp circuit breaker.
2. Circuit 13- 21 amps protected by 25 amp circuit breaker.
3. The above amperages exceed 80% of the breaker ampacity.

RECOMMONDATION(S):

1. Confirm conductors are properly sized for each branch circuit.
2. Determine loads that are fed from each circuit.
3. Investigate adding additional branch circuits to lower percentage of demand on circuit 11 and circuit 13.

ITEM NAME/LOCATION:  
RP1WB-Conference Room C/Room 175

3/19/2022 10:02:23 PM



FLIR0715.jpg



72502114

**Parameters**

Emissivity	0.90
Distance	0.91 m
Reflected temp.	26.1 °C
Atmospheric temp.	20.0 °C
Relative humidity	50.0%
Ext. optics temp.	20.0 °C
Ext. optics trans.	1.00

**File information**

File name	FLIR0715.jpg
File size	2085 KB
Width	1024
Height	768
Minimum temp.	22.5 °C
Maximum temp.	27.5 °C

**Camera information**

Camera model	FLIR T1020
Lens	FOL36
Camera serial	72502114
Filter	
Range max.	150.0 °C
Range min.	-40.0 °C
Field of view	27.33

**Measurements**

<b>Bx1</b>	
Max	27.5 °C
Avg	25.5 °C
Min	23.3 °C

**Geolocation**

Coordinates	
Compass degrees	312° NW

**Isotherms**

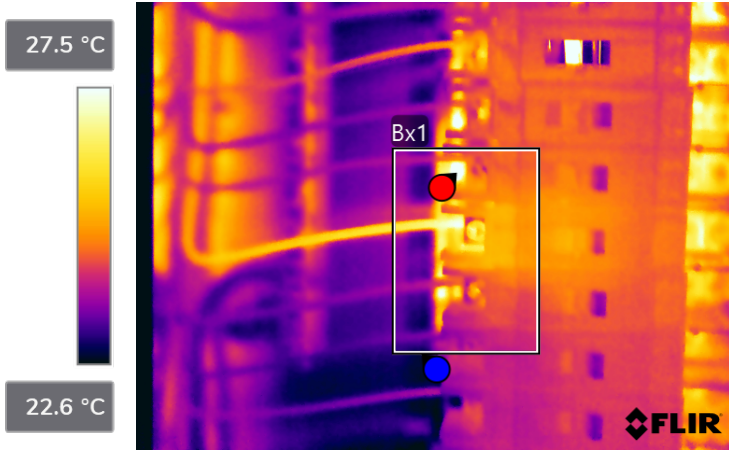
NOTES:

1. Amperage not determined.

RECOMMONDATION(S):

1. Amprobe loads.
2. Confirm conductor and breaker size meet circuit demands
3. Inspect/clean/tighten termination point for phase A.

ITEM NAME/LOCATION:  
Upstairs Closet Room 223A  
Circuit 13  
3/19/2022 11:28:11 PM



FLIR0716.jpg



72502114

**Parameters**

Emissivity	0.90
Distance	0.91 m
Reflected temp.	26.1 °C
Atmospheric temp.	20.0 °C
Relative humidity	50.0%
Ext. optics temp.	20.0 °C
Ext. optics trans.	1.00

**File information**

File name	FLIR0716.jpg
File size	2103 KB
Width	1024
Height	768
Minimum temp.	22.1 °C
Maximum temp.	31.4 °C

**Camera information**

Camera model	FLIR T1020
Lens	FOL36
Camera serial	72502114
Filter	
Range max.	150.0 °C
Range min.	-40.0 °C
Field of view	27.33

**Measurements**

<b>Bx1</b>	
Max	28.7 °C
Avg	24.5 °C
Min	22.8 °C

**Geolocation**

Coordinates	
Compass degrees	19° N

**Isotherms**

NOTES:

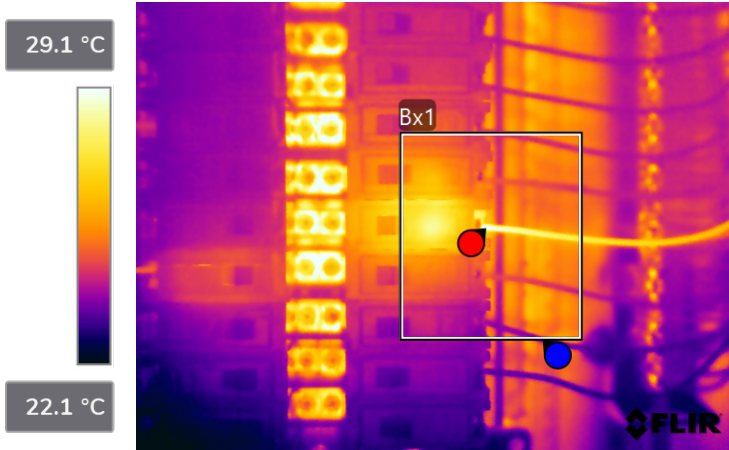
1. Amperage not determined.

RECOMMONDATION(S):

1. Amprobe loads.
2. Confirm conductor and breaker size meet branch circuit demands.
3. Replace breaker.



ITEM NAME/LOCATION:  
RP2-EA Room 223A  
Circuit 37  
3/19/2022 11:44:12 PM



FLIR0717.jpg



72502114

**Parameters**

Emissivity	0.90
Distance	0.91 m
Reflected temp.	26.1 °C
Atmospheric temp.	20.0 °C
Relative humidity	50.0%
Ext. optics temp.	20.0 °C
Ext. optics trans.	1.00

**File information**

File name	FLIR0717.jpg
File size	2123 KB
Width	1024
Height	768
Minimum temp.	21.6 °C
Maximum temp.	30.7 °C

**Camera information**

Camera model	FLIR T1020
Lens	FOL36
Camera serial	72502114
Filter	
Range max.	150.0 °C
Range min.	-40.0 °C
Field of view	27.33

**Measurements**

<b>Bx1</b>	
Max	29.3 °C
Avg	25.4 °C
Min	23.5 °C

**Geolocation**

Coordinates	
Compass degrees	

**Isotherms**

NOTES:

1. Amperage not determined.

RECOMMONDATION(S):

1. Amprobe load.
2. Confirm conductor and breaker size meet branch circuit demand.
3. Replace breaker.